



α

## THE ALPHA CONVERTIBLE

Experience the adrenaline pumping thrill of a motorcycle combined with the classic look of an American Hot Rod.



## **ALPHA CONVERTIBLE**

The Alpha Convertible is a two passenger autocycle that is the first of it's kind to offer substantial standard cargo space. This makes it more comfortable and practical for everyday use and the perfect commuter vehicle. All Mash autocycles are 100% handmade in the U.S.A. Enjoy a sleek and timeless vehicle that's not only safe and affordable, but absolutely fun!



**WHAT ARE YOU  
WAITING FOR?**



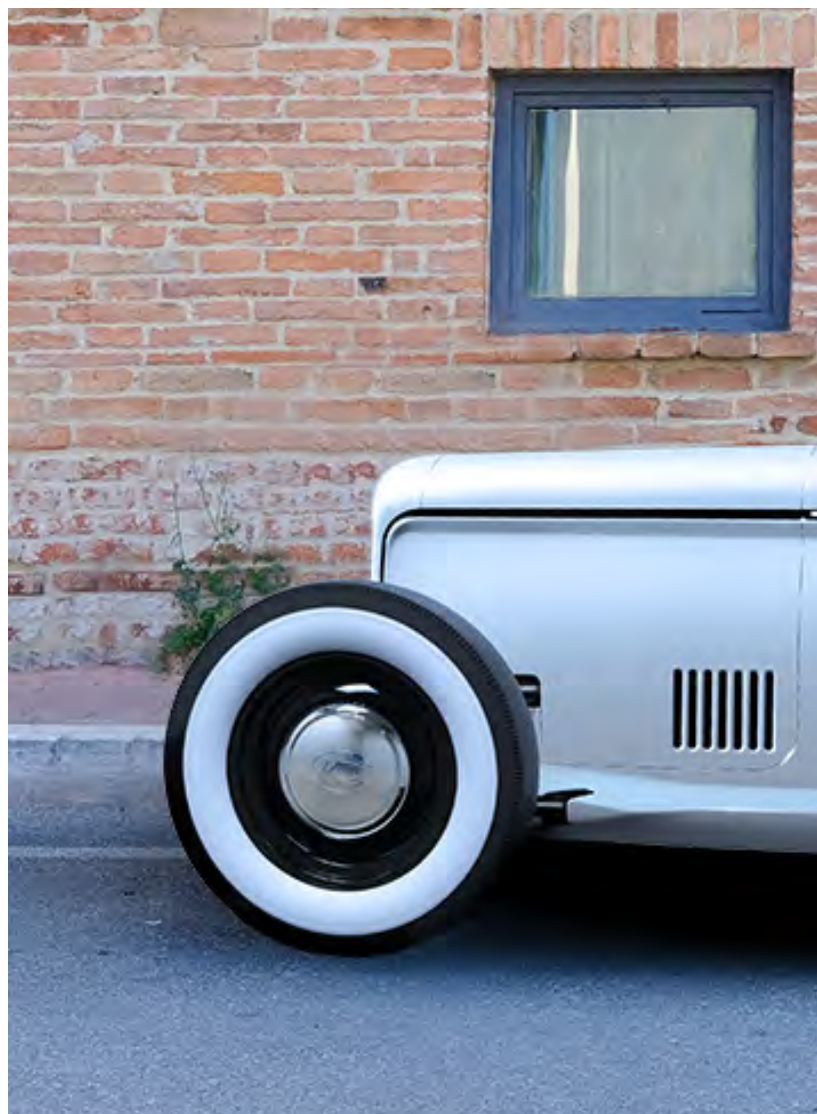
# TECHNICAL SPECIFICATIONS

The first autocycle to offer cargo space for a more comfortable and practical everyday use.

**115** HP  
POWER\*

**5.1** SECONDS  
0-60 SPEED

**7** SPEED  
TRANSMISSION



## FEATURES

Passengers	2
Body Construction	Composite
Exterior Colors	Customizable
Model Year	2021
Place of Manufacture	Stroudsburg, PA

\*ability to increase power with optional 117ci power plant





## SPECIFICATIONS

Power	99-115hp // 112-125 ft-lbs torque
Displacement	107-114 ci // 1750-1870 CC <sup>†</sup>
Transmission	7 Speed Sequential
Weight	1600 pounds
Fuel Cap	12 gallons
Est. MPG	43-45 miles
Est. 0-60 Speed	5.6-5.1 seconds

<sup>†</sup> 117 ci option available with an estimated 30% more power









# CUSTOM BUILD

## BODY

The body of the Alpha Convertible is 3D-printed using a composite material that is made out of 100% recyclable material. This provides a lightweight and durable body to maintain the performance and the balance of the power to weight ratio. Service departments, as well as the driver, will be able to repair or replace components at the push of a button — thus reducing lead time on non-stocked items when accident damage occurs or if you desire styling upgrades.

Color choices are nearly limitless as you are able to choose any color in the color wheel. Finishes are available in Gloss, Satin, or Matte.

## INTERIOR

The dashboard will come standard with digital gauges displaying retro style indicators and a 10" touch screen display. Control all media and climate functions within the touchscreen, eliminating the need for any additional knobs on the dashboard.

The steering wheel has built in rocker switches to operate cruise control, volume and other media functions.

Seats are available in a bucket or bench configuration. Upholstery is available in multiple colors. Stitching can be chosen from a host of primary colors to closely match the exterior, if desired. Finishes include leather, suede or cloth.

## UPGRADES

- + Apple Car Play
- + Android Auto
- + Navigation

## BODY



## UPHOLSTERY







## **SAFETY FIRST**

Standard features include everything you would expect in a standard four-wheel vehicle:

- Seatbelts
- Air Bags
- Anti-Lock Brake System (ABS)
- Standard Rear Camera
- Available Parking Sensors
- Optional retractable safety bar

Customizable Autocycles. Made in the USA.

HEART  
OF A  
HARLEY  
SOUL  
OF A  
HOT ROD





## ADDED VALUE

### STORAGE

With the mid-engine design, the typical engine bay is re-purposed as a large watertight storage area suitable for daily needs, trips to the store or extended trips.

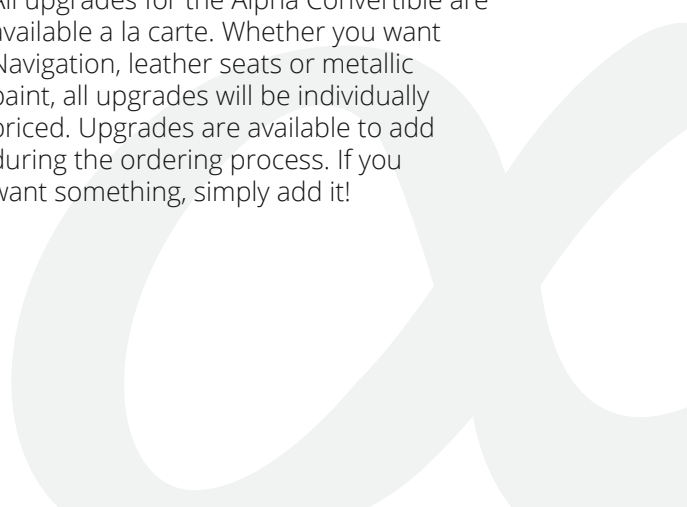
### PERFORMANCE AND SERVICE

With nearly 400 service locations in the United States alone, Alpha owners are able to enhance the performance of their Alpha's with off the shelf parts and accessories as well as perform regular maintenance or repairs at your local shop of choice.

## LUXURY

### UPGRADES

All upgrades for the Alpha Convertible are available a la carte. Whether you want Navigation, leather seats or metallic paint, all upgrades will be individually priced. Upgrades are available to add during the ordering process. If you want something, simply add it!





Customizable Autocylces.  
Made in the USA.